



JULY 2021



FRANKLIN SMART YARDS

Partnering with UT/TSU Extension

Landscaping with Native Plants

July typically starts our hot-dry weather for Middle Tennessee. Luckily, we have native plants that will thrive in many conditions, including drought! Native plants have many inherent qualities and adaptive traits that make them aesthetically pleasing, practical, and ecologically valuable for landscaping. When landscaping with natives, match the right plants with the right site conditions in your region.

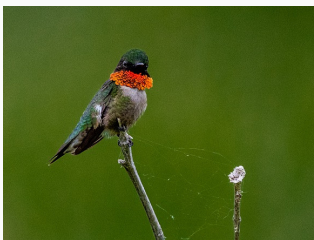
Seasonal Highlights

[CLICK BELOW FOR MORE INFORMATION]

Wildlife

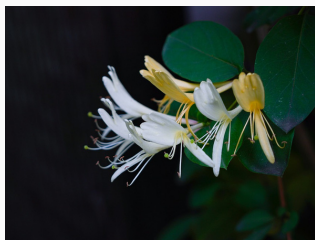
Common Invasive

Native Alternative



RUBY-THROATED HUMMINGBIRD

Archilochus colubris



JAPANESE HONEYSUCKLE

Lonicera japonica



CORAL HONEYSUCKLE

Lonicera sempervirens

Upcoming Events

Managing Fire Ants - Williamson County Public Library (Virtual)

JULY 19 @ 1:00PM

National Parks and Recreation Month - Get Outside!

JULY

Useful Resources

Urban Water Stewardship

Hummingbird Gardening in Tennessee

Basics of Irrigation in the Residential Landscape

Rain Barrels Make Good Sense

